

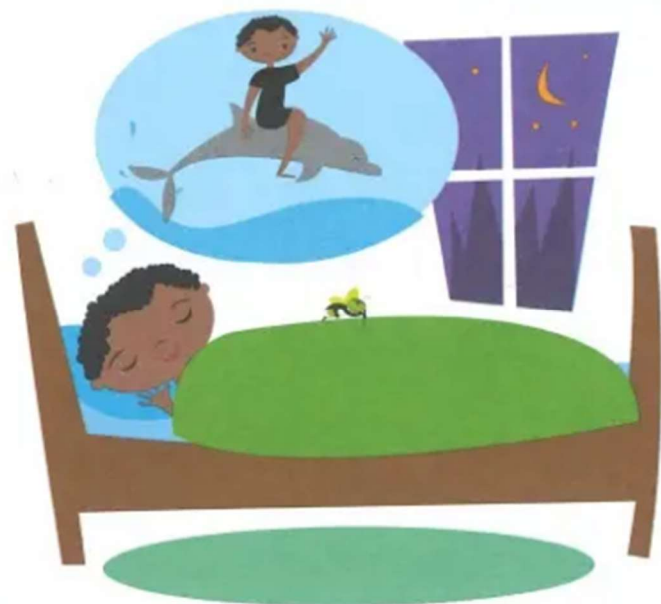
A pianist with great rhythm does not stop at the bar line.
Play this piece with a flowing rhythm that moves OVER the bar line.

Color Your Music:

1. Use your favorite color crayon. Trace the arrows to remind you to keep the rhythm flowing!

At the keyboard:

2. Play, holding the damper pedal down.
3. Are you creating *f*, *mf*, and *p* sounds with your firm fingertips?
4. Can you make slow dolphin leaps using your wrist at the end?



20

Dolphin Dreams

Gently floating along

1 on __?

5 on __?

Pedal _____
mark: Press the damper pedal down and hold.

5

3

mf

Dol - phins are swim - ming a round me.

1

9

1

f

Skip to the D, (dol - phin!)

p

Skip to the D, (dol - phin!)

13

mf

Dol - phins are leap - ing so high! rit. *p*

3 Lift to next HIGHER F.

3 Lift to next HIGHER F.

3

Lift pedal.